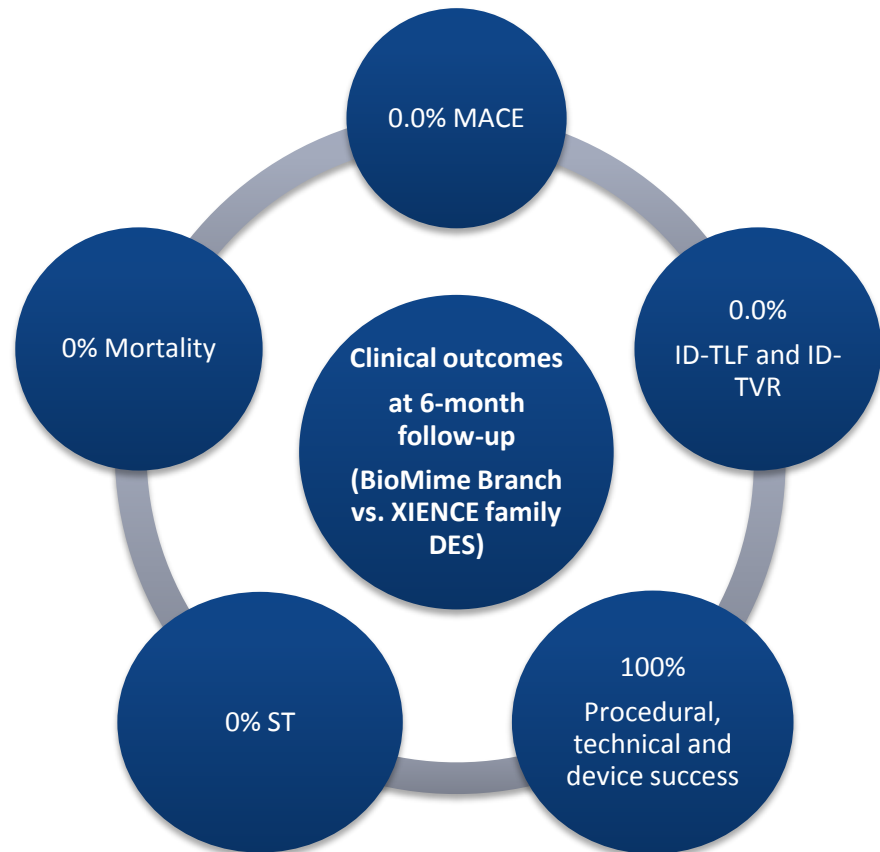


BioMime Branch -1

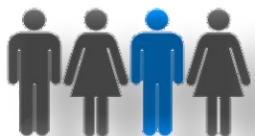
Study Highlights

- Principal Investigator: Dr. Praveen Chandra
- The BioMime Branch -1 Study is a prospective, active control, open-label, multi-centre, randomized clinical trial of the BioMime™ Branch Sirolimus-Eluting Coronary Side Branch Stent System and BioMime™ sirolimus-eluting coronary stent (SES) system in main branch vs. XIENCE family DES in side and main branch in patients with coronary bifurcation lesions
- Two-year clinical follow-up including angiographic and OCT analysis at six-month follow-up.
- At six-month follow-up, rate of ischaemia-driven target lesion failure (primary endpoint) is similar (BioMime-Branch vs. XIENCE family DESs, 0.0% vs. 0.0%)



❖ Study Design

A prospective, active control, open-label, multi-centre, randomized clinical trial



A total of 183 patients will be enrolled and randomly assigned (2:1) to BioMime Branch or XIENCE family DESs. Till date, 29 patients have been enrolled in the study.



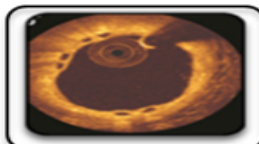
10-15 investigational sites across India



Clinical/Telephonic follow-up at 1-month, 6-month, 12-month and 24-month post-procedure



Angiographic follow-up at 6 months
Analysed by CBCC Global Research LLP, Ahmedabad, India



OCT follow-up at 6 months
Analysed by CBCC Global Research LLP, Ahmedabad, India

❖ Study Results

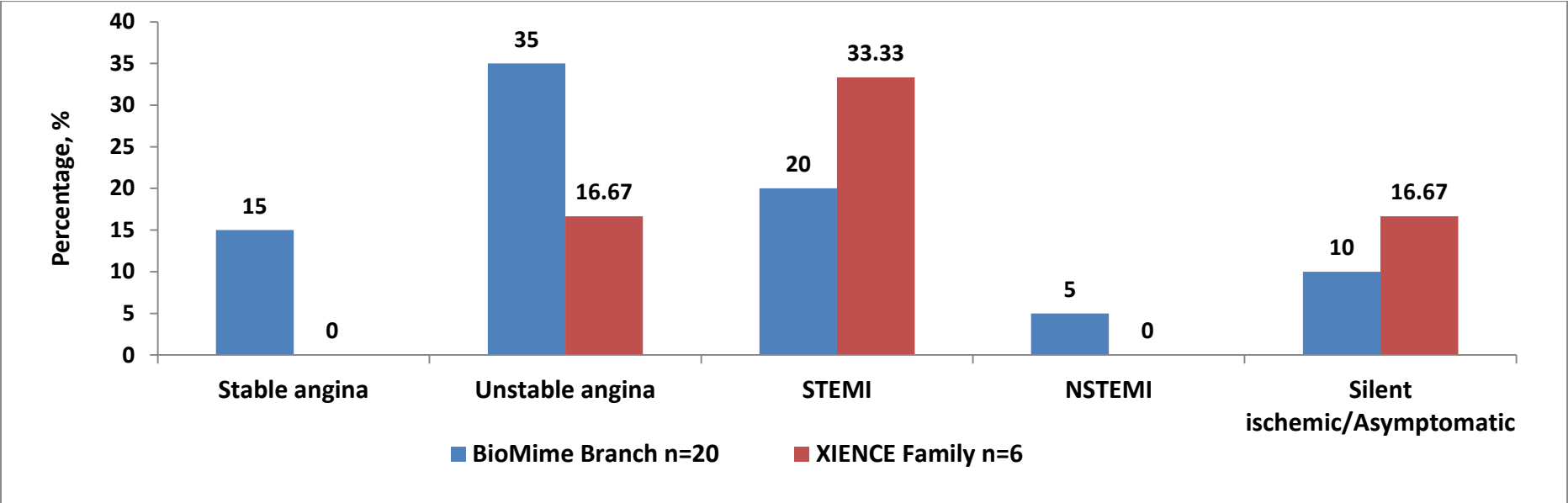


Figure 1: Cardiac Status

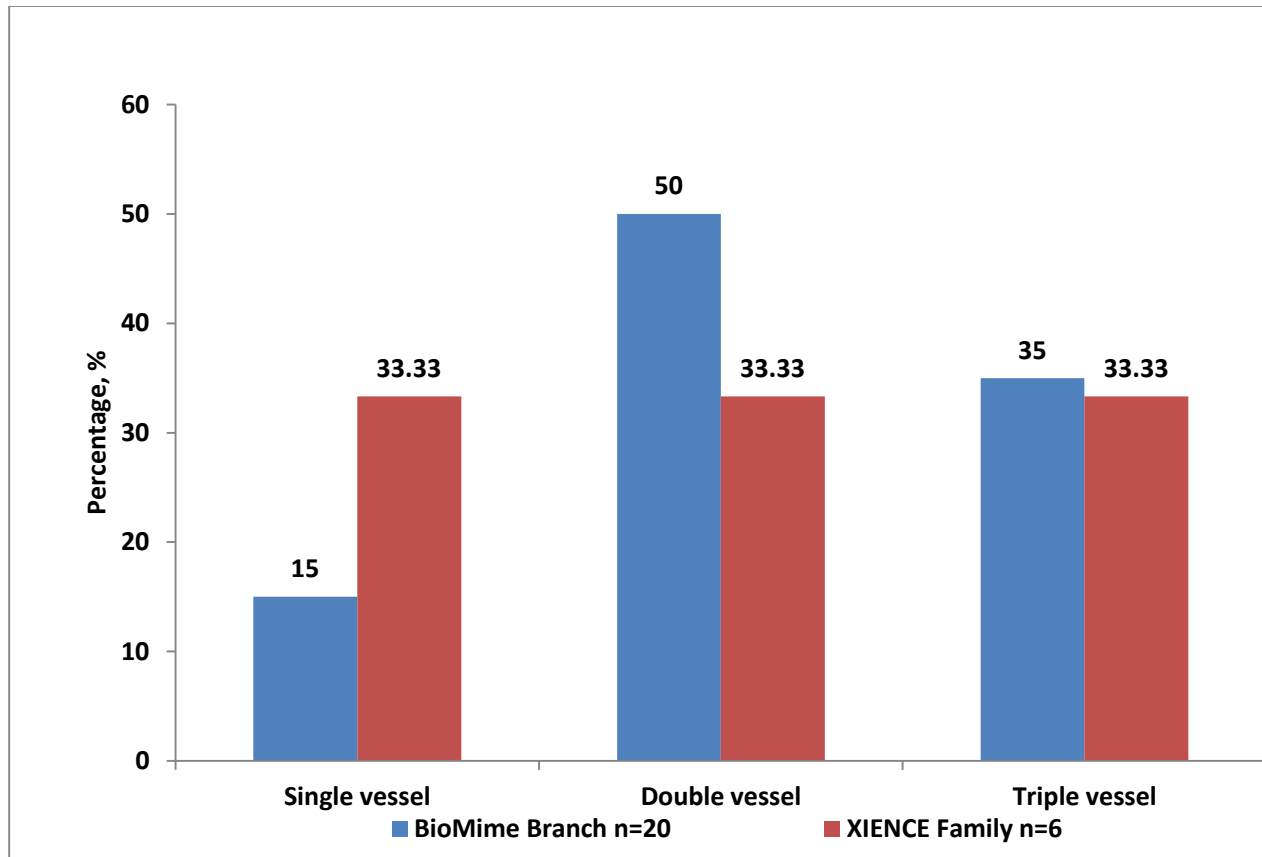


Figure 2: Diseased vessel

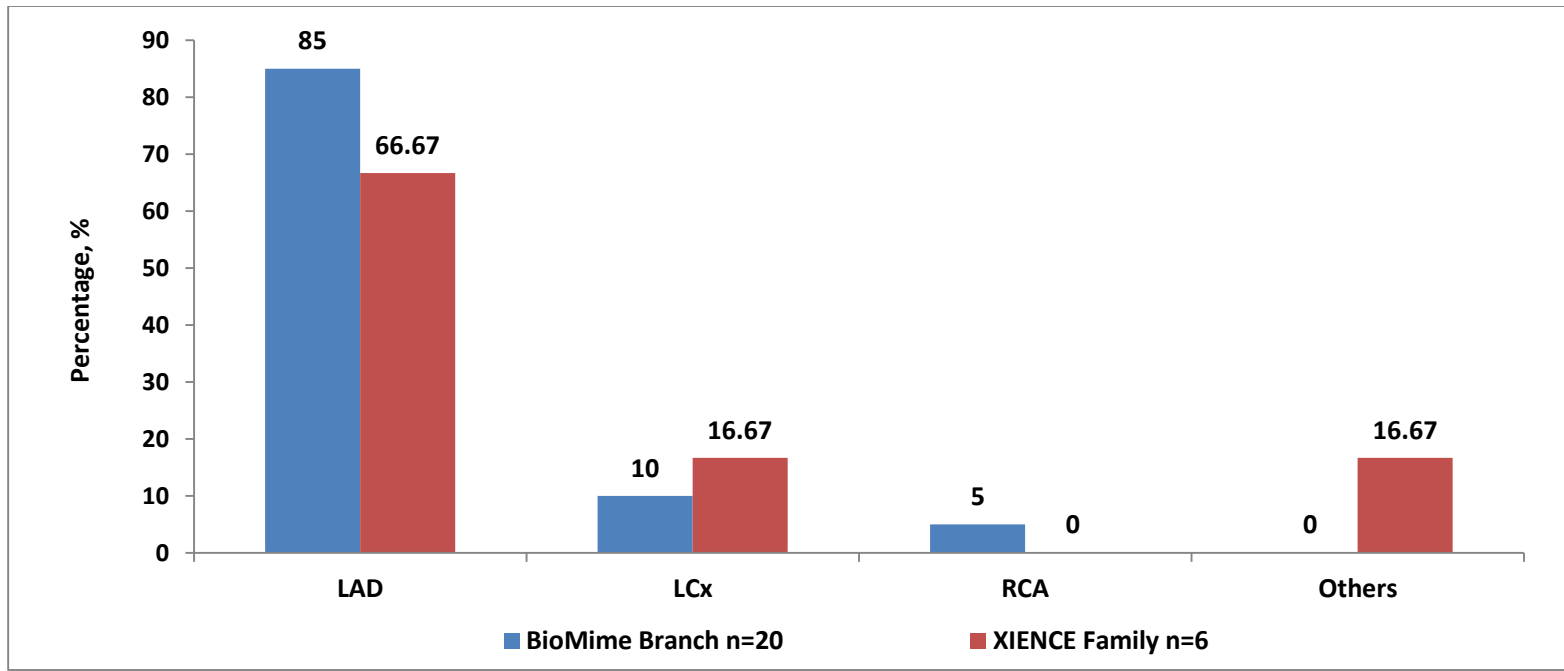


Figure 3: Lesion location

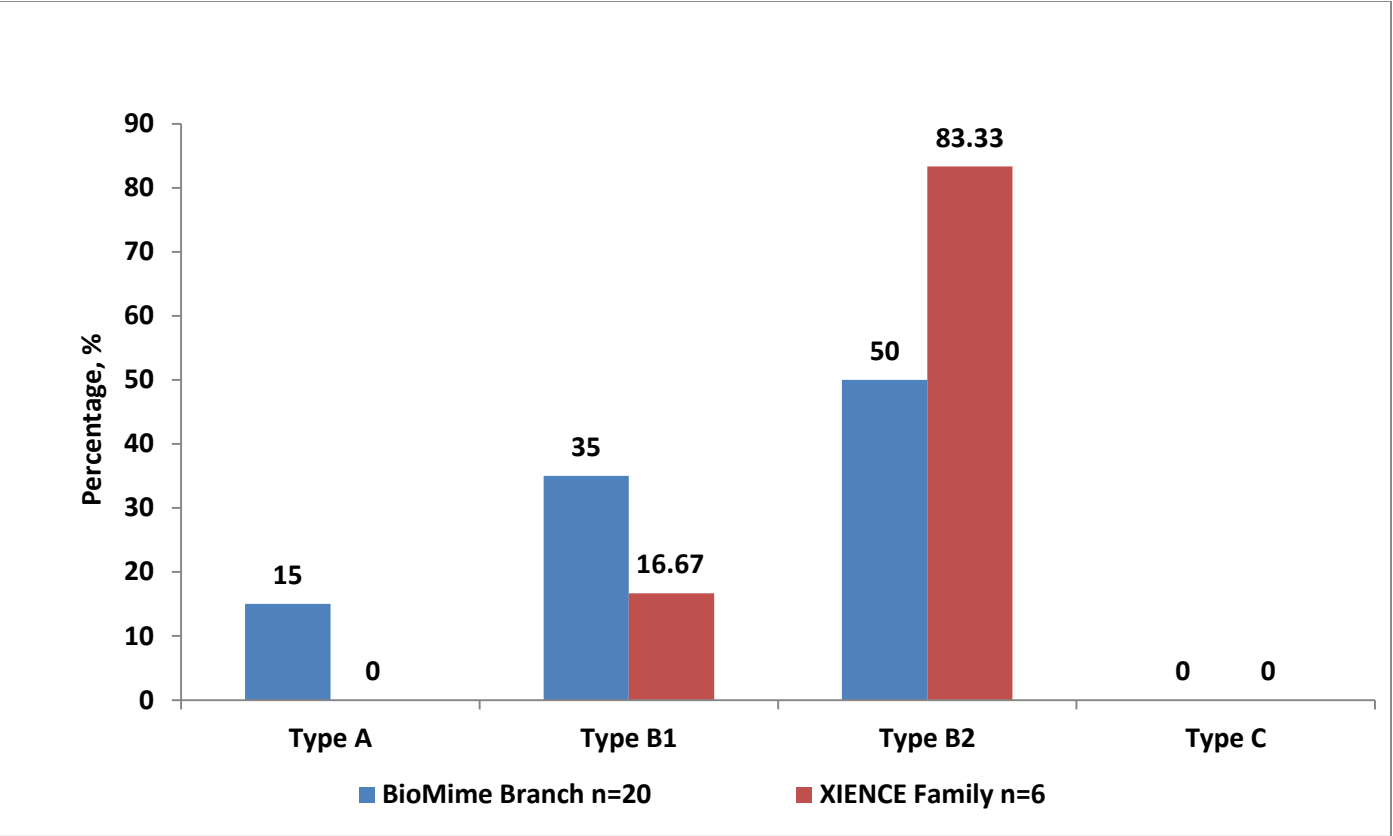


Figure 4: Lesion class

❖ References

1. Clinical Trial Registry- India (CTRI)
<http://ctri.nic.in/Clinicaltrials/pmaindet2.php?trialid=20006&EncHid=&userName=CTRI/2017/10/010239>.
2. Okamura, T., Onuma, Y., Yamada, J., Iqbal, J., Tateishi, H., Nao, T., & Yano, M. (2014). 3D optical coherence tomography: new insights into the process of optimal rewiring of side branches during bifurcational stenting. *EuroIntervention*, 10(8), 907-915.
3. Selvamani. S, BioMime Branch-1: a randomized comparison of sirolimus-eluting coronary side branch stent systems and everolimus-eluting stent systems to assess safety and performance in patients with de novo coronary bifurcation lesions. EuroPCR 2020 e-course.