

# MITSU AB™ Polyglactin 910 Suture Study

## Study Highlights

- Principal Investigator: Dr. Asha Dixit
- This was a prospective, multicenter, post-marketing, randomized-controlled, single-blind, comparative study between MITSU AB™ Polyglactin 910 Suture and VICRYL® Plus Polyglactin 910 Suture who underwent abdomen, uterus, vaginal and perineal surgery

## ❖ Study Design



A total of 122 subjects (MITSU AB: 61 subjects; VICRYL Plus: 61 subjects)



Clinical follow-up at 14 days, 30 days and 6 months



2 sites across India

❖ Results

➤ Operational Characteristics

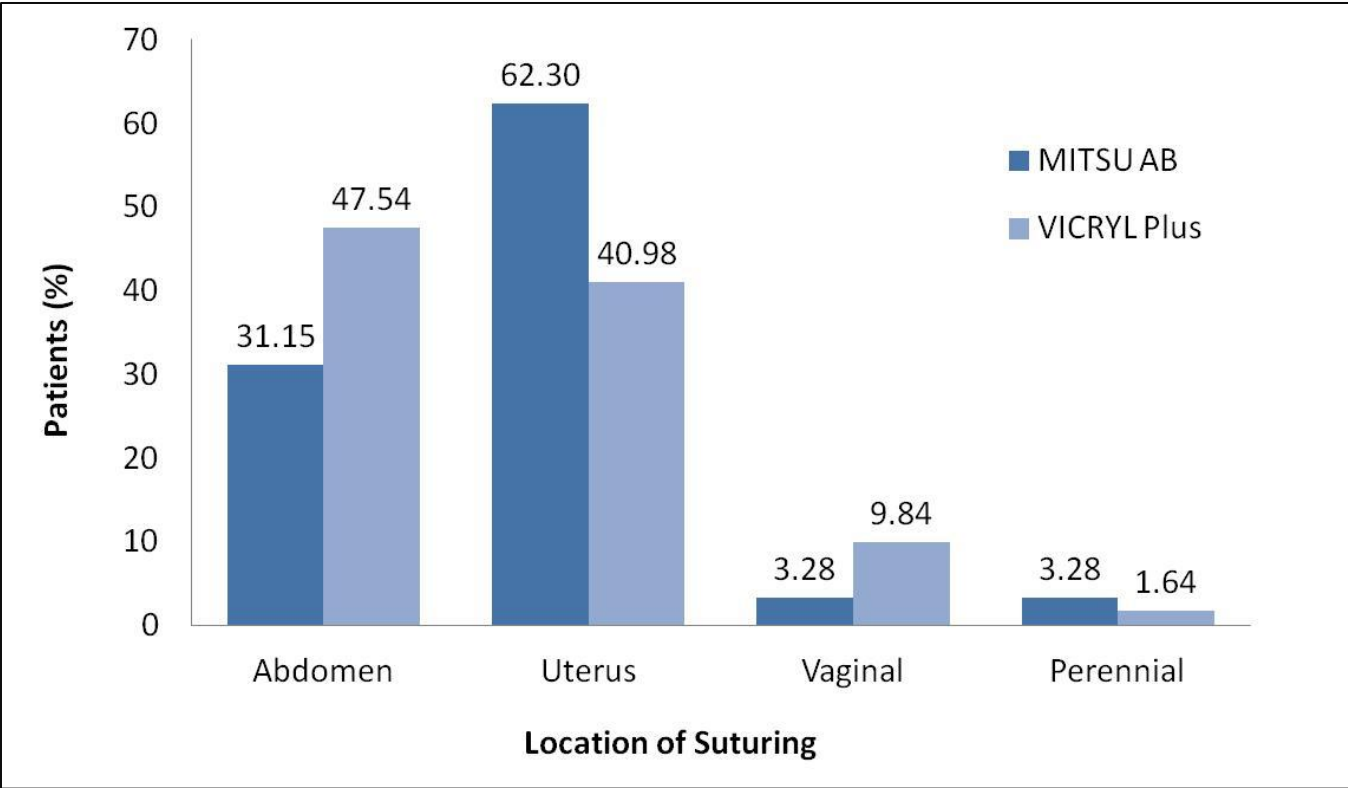


Figure 1: Comparison of Location of Suturing

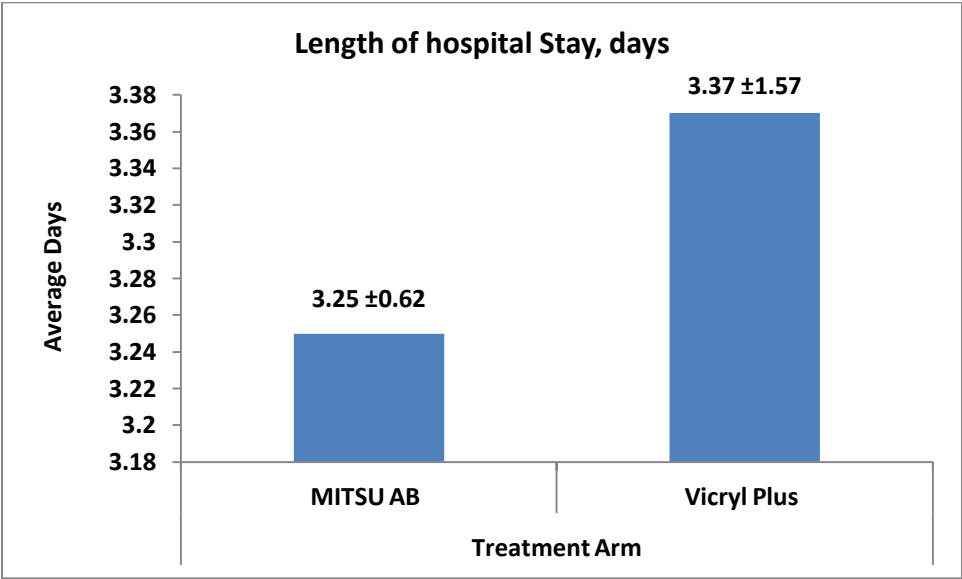


Figure 2: Length of hospital Stay

## ❖ Clinical outcomes

None of the patients, in either arm, exhibited the signs of wound dehiscence at 14 days, 30 days and 6 months follow-up visits

**There was no adverse event or serious adverse event reported in the study**

There was no incidence of surgical site infection till 6 months in either arm

**The safety and efficacy of MITSU AB is comparable to Vicryl Plus suture**

## ❖ References

1. ClinicalTrials.gov – CTRI/2017/01/007736  
<http://ctri.nic.in/Clinicaltrials/showallp.php?mid1=16299&EncHid=&userName=CTRI/2017/01/007736>
2. Dixit A, Nadkarni P, Thakkar A. Safety and efficacy of triclosan-coated polyglactin 910 suture in prevention of surgical site infection in postpartum women: A randomized controlled trial. Journal of Indian Medical Association. 2018; 116(11):12-15.